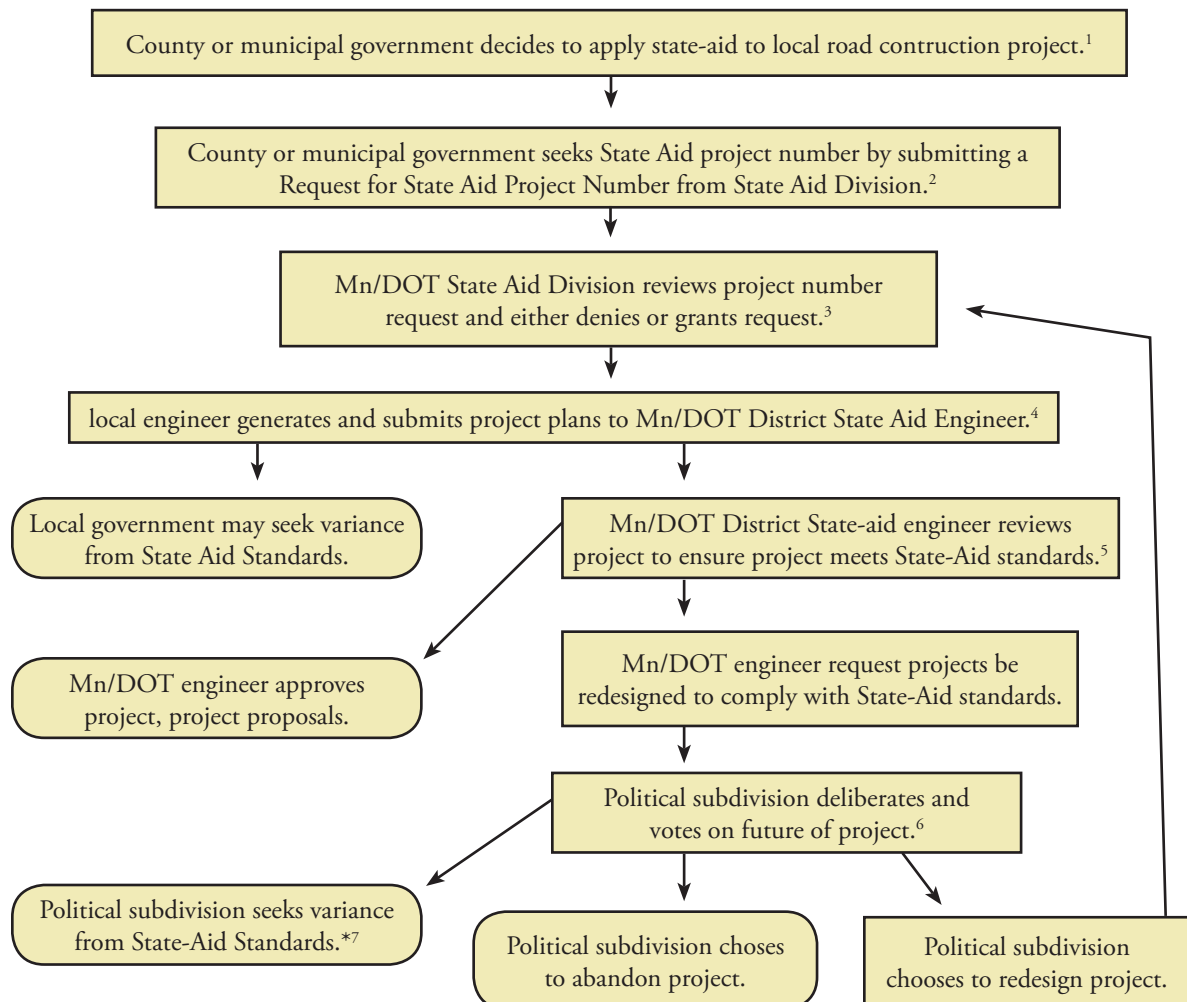




APPLYING STATE AID TO LOCAL ROAD PROJECTS

September 2010

Local roads under the control of county or municipal government may qualify for State-Aid distributed by the Minnesota Department of Transportation (Mn/DOT). The following flow chart provides a basic overview of the project approval process that local governments must use.





*For related publications, visit
www.publichealthlawcenter.org*

The Public Health Law Center provides information and technical assistance on issues related to tobacco and public health. The Public Health Law Center does not provide legal representation or advice. This document should not be considered legal advice. For specific legal questions, consult with an attorney.

1 MINN. STAT. § 162.08 Subd. 10; MINN. STAT. § 162.14, subd. 3.

2 MINN. DEP'T OF TRANSP., STATE AID MANUAL, CH. 5.4, 1 (2008), available at <http://www.dot.state.mn.us/stateaid/manual/sam07/pdf/SAMChapter5-4.pdf>; MINN. STAT. § 162.08, subd. 10; MINN. STAT. § 162.14, subd. 4; MINN. R. 8820.2800, subp. 3

3 MINN. STAT. § 162.08, subd. 10; MINN. STAT. § 162.14, subd. 4; MINN. R. 8820.2800, subp. 3; MINN. DEP'T OF TRANSP., STATE AID MANUAL, CH. 5.4, 1 (2008), available at <http://www.dot.state.mn.us/stateaid/manual/sam07/pdf/SAMChapter5-4.pdf>.

4 MINN. STAT. § 162.08, subd. 10; MINN. STAT. § 162.14, subd. 4; MINN. R. 8820.2800, subp. 1-2, 6.

5 MINN. STAT. 162.08, subd. 10; MINN. STAT. § 162.14, subd. 4; MINN. R. 8820.2800, subp. 1-2, 6; MINN. R. 8820.1500, subp. 12; MINN. DEP'T OF TRANSP., STATE AID MANUAL, CH. 5.4, 1 (2008), available at <http://www.dot.state.mn.us/stateaid/manual/sam07/pdf/SAMChapter5-4.pdf>.

6 MINN. R. 8820.2800, subp. 2 A; MINN. DEP'T OF TRANSP., STATE AID MANUAL, CH. 5.4, 1 (2008), available at <http://www.dot.state.mn.us/stateaid/manual/sam07/pdf/SAMChapter5-4.pdf>.

7 MINN. R. 8820.330, subp. 1; For more information on the variance process, see Public Health Law Center publication, *Mn/DOT Variance Process Flowchart*, available at <http://publichealthlawcenter.org/topics/special-collections/ship-publications-and-resources-collection>.