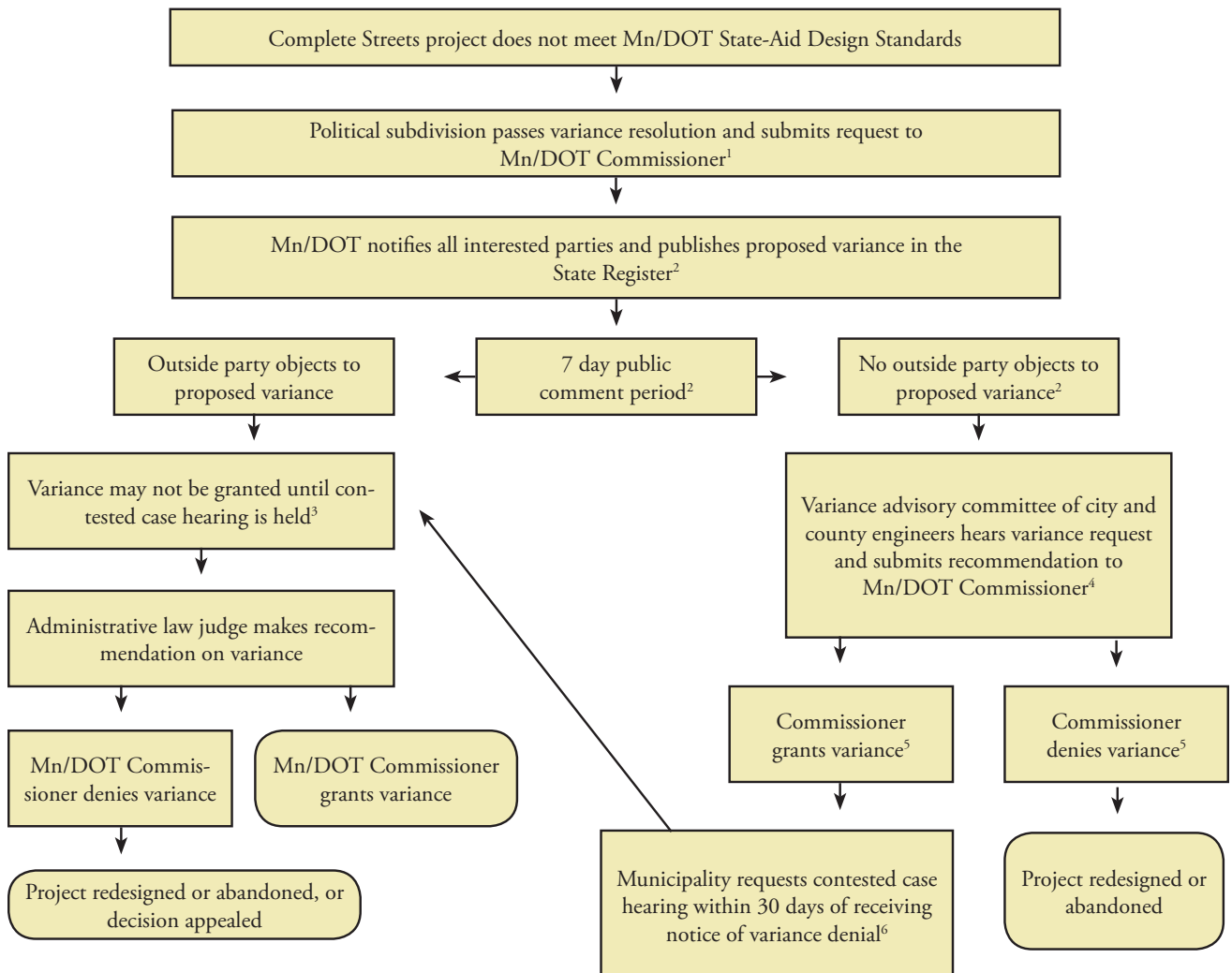




MN/DOT VARIANCE PROCESS

November 2010

Minnesota's recently enacted Complete Streets policy ensures that a local government can request a variance when asking for state funding for a Complete Streets project. The legislation requires Minnesota Department of Transportation (Mn/DOT) to evaluate all Complete Streets' variance requests using specific Complete Streets guidance publications. The following flow-chart provides a basic overview of the Mn/DOT State-Aid variance process.





*For related publications, visit
www.publichealthlawcenter.org*

The Public Health Law Center provides information and technical assistance on issues related to tobacco and public health. The Public Health Law Center does not provide legal representation or advice. This document should not be considered legal advice. For specific legal questions, consult with an attorney.

1 MINN. STAT. § 162.02, subd. 3a; MINN. STAT. § 162.09, subd. 3a; MINN. R. 8820.3300, subp. 1; see also MINN. DEP'T OF TRANSP., DESIGN ELEMENT VARIANCE JUSTIFICATION CHECKLIST (2010), *available at* <http://www.dot.state.mn.us/stateaid/ProjDeliv/Plans/DesignElementVarianceJustificationChecklist-a212.pdf>.

2 MINN. STAT. § 162.02, subd. 3a; MINN. STAT. § 162.09, subd. 3b; MINN. R. 8820.3300, subp. 2.

3 MINN. STAT. § 162.02, subd. 3a; MINN. STAT. § 162.09, subd. 3b; MINN. R. 8820.3300, subp. 4.

4 MINN. R. 8820.3400, subp. 3 & 4.

5 MINN. R. 8820.3300, subp. 3

6 MINN. STAT. § 162.02., subd. 3a; MINN. STAT. § 162.09, subd. 3b; MINN. R. 8820.3300, subp. 4.